

Newsletter – December 2022

Friends of Lee Point (FLP) are a community-based group of Darwin residents campaigning to conserve the natural beauty and biodiversity of Lee Point in Darwin. We acknowledge that the Larrakia are the traditional owners of Lee Point and the land and surrounding sea require protection, management and respect from all.

Greetings Friends,

This newsletter covers November and December and includes; Gouldians, a new Petition, why Lee Point is a special part of Darwin, plants and wildlife - [links](#) used in this newsletter are given on the last page.

1. Gouldians

A Gouldian Workshop was run Saturday on 26 November at Darwin Community Arts in Coconut Grove, to help people paint their own Gouldians. We had lots of fun and most of the paint ended up on the Gouldians.



Gouldian Finches make for good stories and pictures.

FRIENDS OF LEE POINT



Alesah Darlinson in Darwin promoting her new picture book, RUSTY, the RAINBOW Bird.

We joined Alesah at Lee Point Dam and saw lots of birds. Her book is pretty good too....[read more](#)

Gouldian Finches have been moving around a lot more looking for food making them harder to find - [sighting record summary](#). We expect to see more of them near Lee Point dam next May (like this year). Their breeding season runs from April to June. Hopefully the bulldozers will stay away!

2. Petition to DHA shareholder ministers

DHA is wholly owned by the Australian Government. We are hoping that the new government ministers responsible for DHA and their developments will listen to the community and take note of a new petition.

The petition: *calls on the (two) shareholder ministers of DHA to intervene, stop the defence housing project at Lee Point and relocate it to a more suitable area.*

You can help by signing the: [PETITION](#)

3. Lee Point Trivia

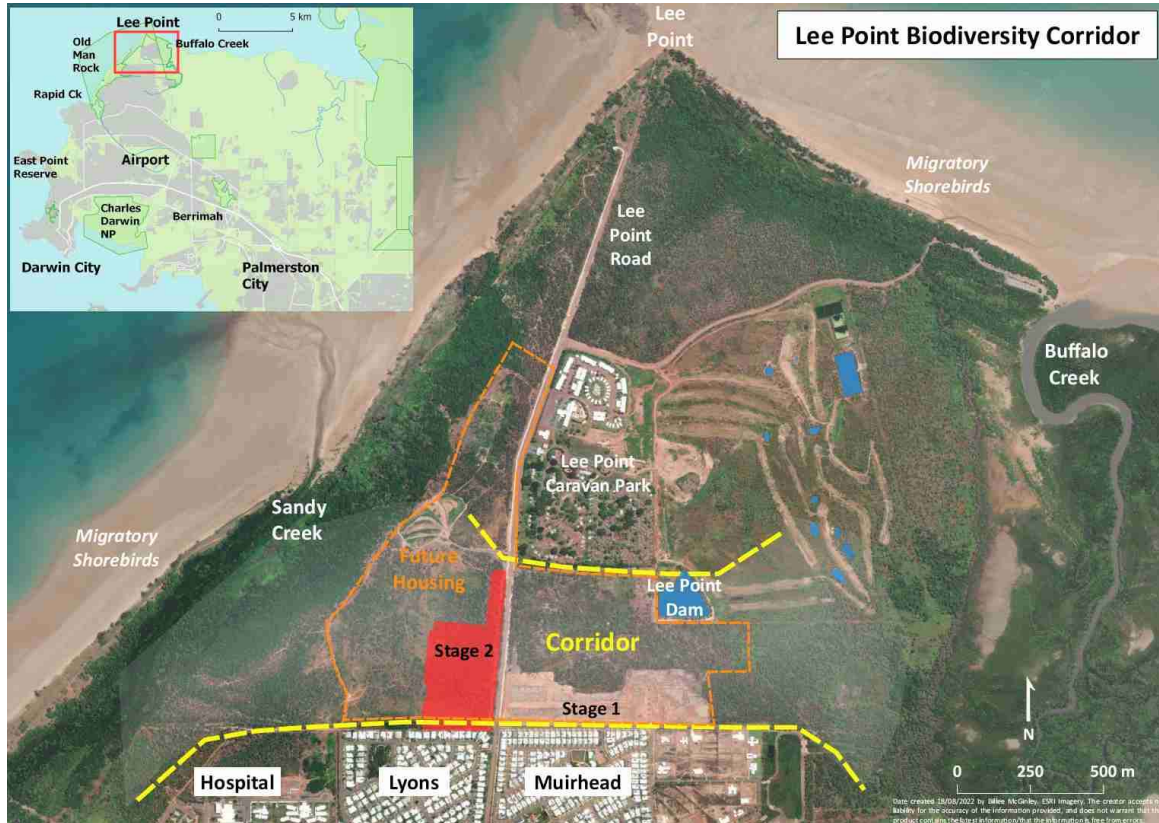
Q1. Over half of Casuarina Coastal Reserve (CCR) is in Lee Point. CCR is the most visited reserve in the Territory. How many visits (not visitors) did it receive in 2021?

- A. 0.8M B. 1.0M C. 1.2M D. over 1.4M

FRIENDS OF LEE POINT

4. Lee Point – a special part of Darwin.

Our latest paper called: [Lee Point - a special part of Darwin](#) includes woodland, Larrakia, ecotourism and threatened species in the Darwin area. Lots of green ants were encountered while looking for large woodland trees!



Finches at Lee Point Dam

Lee Point Dam has always been very good for finches. This year it was amazing - 11 out of the 20 grass finch species in Australia were seen (9 photographed). Uncommon visitors were Star, Zebra, Pictorella and Painted Finch.



Painted Finch



Crimson Finch

Lee Point Dam photos by [John Gruen](#) Dec 2022

FRIENDS OF LEE POINT

5. Plants and wildlife

Clothes-peg Tree (*Grevillea decurrens*)



Flowers in March



Seed casings in November



Black Footed Tree Rat



The (endangered) [Black-footed Tree-rat](#) eats these and other [woodland plants](#) . It likes to shelter in large tree hollows during the day and is active at night.

The Lee Point [Corridor needs protecting](#) . How you can help is set out in [What to do next](#) .

FRIENDS OF LEE POINT

Field Lily (*Crinum augustifolium*)

The Field Lily is native to northern Australia and flowers this time of year. The lily on Darwin median strips is usually a [Beach Spider-Lilly](#) (*Hymenocallis littoralis*), not a native species.



Northern sugarbag bees (*Tetragonula mellipes*) collecting nectar from a Field Lily. These small stingless bees (also called bush bees) are native to northern Australia.

FRIENDS OF LEE POINT

Coastal She-oak (*Casuarina equisetifolia*)

Coastal She-oaks are a distinctive feature of the coastal area at Lee Point. They are sensitive to fire and unfortunately certain areas were devastated by fire last year.



Replanting Coastal She-oaks south of the Lee Point picnic area after the Oct 2021 fire Friends of Casuarina Coastal Reserve and the NT Government have been working together to restore the above area. It was also good to see City of Darwin investing in trees this year to cool Darwin. Darwin is getting hotter and will need more shade trees... [ABC POST 1](#)

UN biodiversity conference – COP15

On a global scale, a historic agreement was reached this month at the UN biodiversity conference – COP15. The most significant part of the agreement is a commitment to protect 30 per cent of land and water considered important for biodiversity by 2030, known as “30 by 30” – [ABC POST 2](#). Australia currently protects around 22% of land and 30% of water.

Let’s hope the “30 by 30” agreement will mean some good news for Lee Point in 2023.

FRIENDS OF LEE POINT



Some art from the Gouldian workshop.

Have a happy new year

and

enjoy the wet season at Lee Point

Answer Q1 - D. There were 1.45M visits in 2021 based on [NT Government park visitor data](#)

FRIENDS OF LEE POINT

Links used in the newsletter:

1. read more: <https://www.penguin.com.au/authors/aleesah-darlison>
2. sighting record summary: <https://savelepoint.org.au/gouldian-finch-irruption-at-lee-point/>
3. PETITION: <https://actionnetwork.org/petitions/stop-the-defence-housing-project-at-lee-point/>
4. Lee Point – a special part of Darwin: <https://savelepoint.org.au/lee-point-a-special-part-of-darwin-nt/>
5. John Gruen: <https://www.facebook.com/groups/727665138011698/posts/1296343604477179>
6. Black-footed tree-rat: https://nt.gov.au/_data/assets/pdf_file/0018/205515/black-footed-tree-rat-kimberley-mainland-nt.pdf
7. What to do next: <https://savelepoint.org.au/what-to-do-next/>
8. Corridor needs protecting: <https://savelepoint.org.au/why-lee-point-corridor-needs-protecting/>
9. Beach Spider-Lilly: <https://www.territorynativeplants.com.au/hymenocallis-littoralis-beach-spiderlilly>
10. ABC POST 1: <https://www.abc.net.au/news/2022-12-04/darwin-s-lack-of-shade-trees-amid-heatwaves-in-hot-season/101723626>
11. ABC POST 2: <https://www.abc.net.au/news/2022-12-20/cop15-reaches-deal-to-halt-decline-in-nature-by-030/101790872>
12. NT Government park visitor data: <https://depws.nt.gov.au/parks-and-wildlife-commission/parks-and-wildlife-statistics-and-research/park-visitor-data>